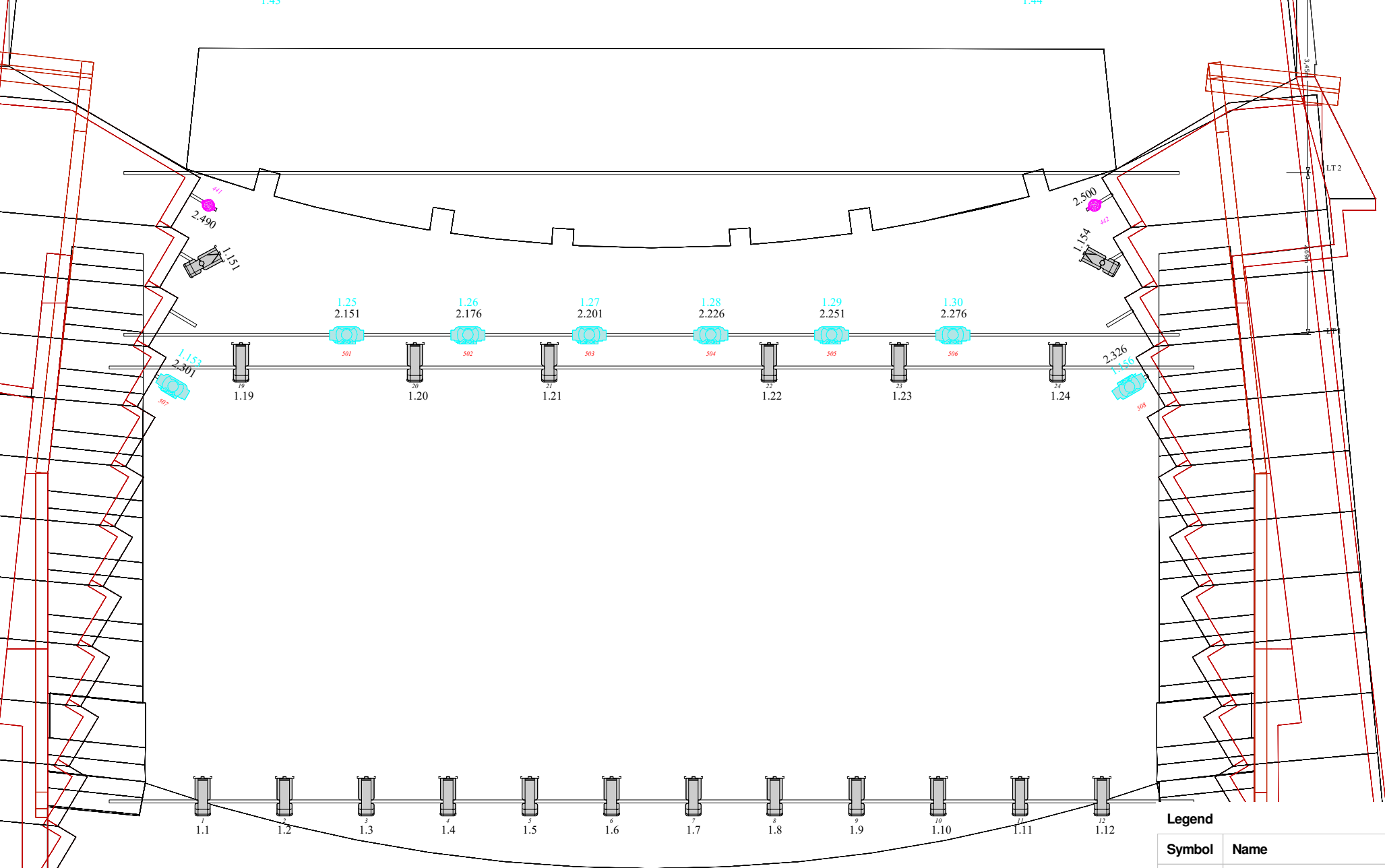


- FT16
- LT7 LX7
- FT15
- HT6 Acoustic shell 6 (Used as border)
- FT14 Backdrop on manual track system
- FT13
- LT6 LX6
- FT12 Legs 4 (High speed wire motor)
- FT11 (High speed wire motor)
- HT5 Acoustic shell 5 (Used as border)
- FT10 Curtain on manual tracksystem
- FT9 (High speed wire motor)
- LT5 LX5
- FT8 Legs 3
- FT7 (High speed wire motor)
- HT4 Acoustic shell 4 (Used as border)
- FT6 Legs 2
- LT4 LX4
- FT5 (High speed wire motor)
- FT4 Legs
- HT3 Acoustic shell 3 (Used as border)
- FT3 (High speed wire motor)
- FT2 Proscenium legs
- LT3 LX3
- FT1 Proscenium border



Legend

Symbol	Name	Count
	High End SolaSpot Pro 1000	8
	Chauvet Outcast 2X wash	20
	XLED HD	34
	ADB Warp/M 12-30deg	16
	Pacific 14\leftrightarrow35° Zoom	18
	Pacific 23\leftrightarrow50° Zoom (Teppelys med gobo)	2
	2'lites Blinder 650W DWE	5

Salslys: 65 x Cameo H2 FC 13 ch
 Betjenes fra panel ved mikser og scenen
 Kan betjenes fra lysbord på SACN univers 98+99
 Univers 98: 35 fixtures, start adresse 1
 Univers 99: 30 fixtures, start adresse 1

Lys ved innganger: 1.504-1.507
 (SKAL STÅ TIL 15% UNDER FORESTILLING)

Grunnet husets brannvarslingsanlegg skal all bruk av røyk avklares på forhånd.
 Vi tilbyr en MDG ATMe hazer plassert det det sprer seg best i rommet.
 Skal medbrakt røykmaskin benyttes, MÅ den ha "Fast dispaear" røykvæske.

ARENDAL KULTURHUS

Store Torungen

Teknisk leder:	Finn Cato Andersen
Mobil:	+47 915 87 092
E-post:	fca@arendalkulturhus.no
Printed:	14.Sep.23
Printed By:	Bjørnar Skutlaberg
File:	Store Torungen host 2023