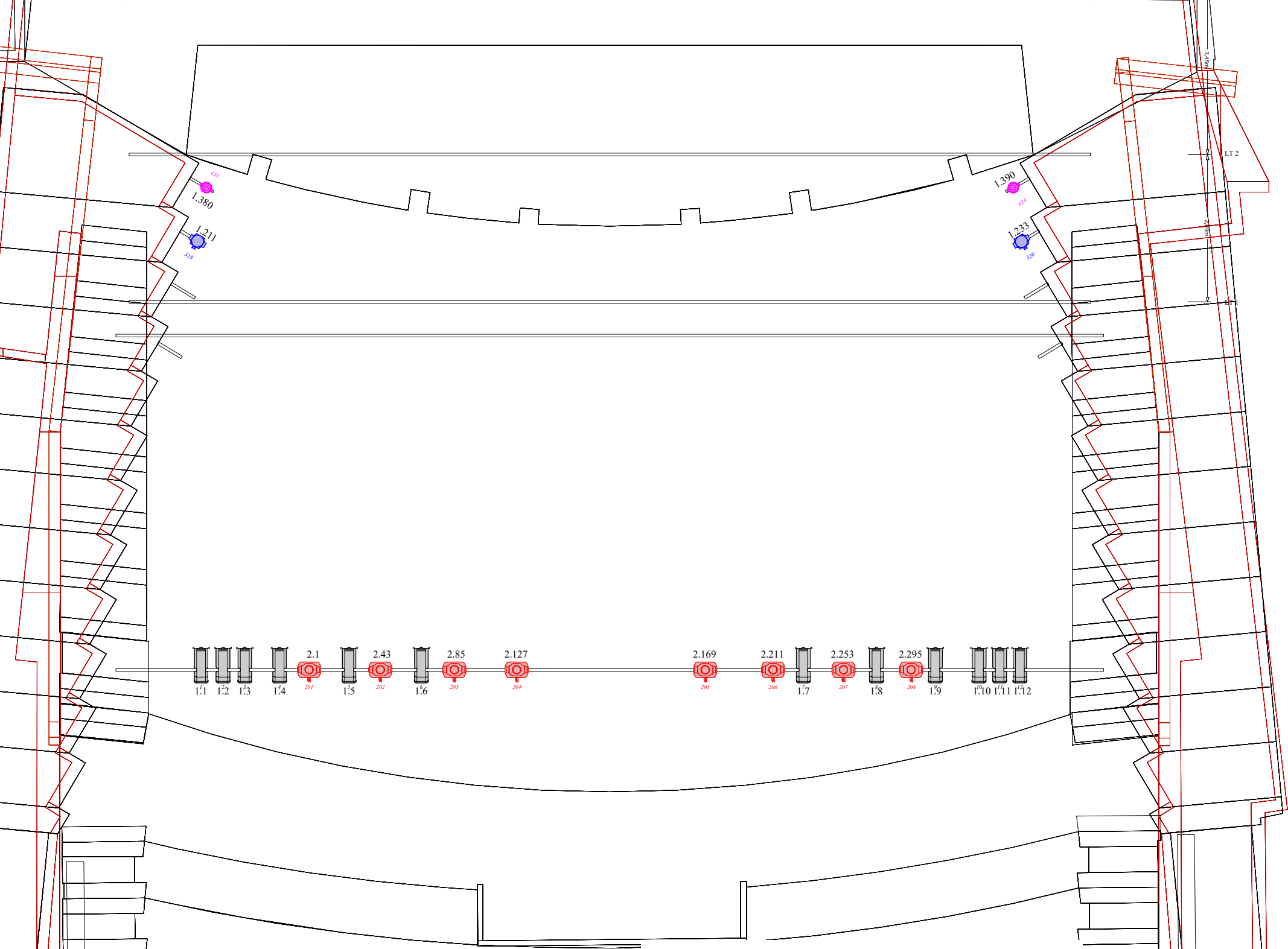


- FT16
- LT7 LX7
- FT15
- HT6 Acoustic shell 6 (Used as border)
- FT14 Backdrop on manual track system
- FT13
- LT6 LX6
- FT 12 Legs 4 (High speed wire motor)
- FT11 (High speed wire motor)
- HT5 Acoustic shell 5 (Used as border)
- FT 10 Curtain on manual track system
- FT9 (High speed wire motor)
- LT5 LX5
- FT8 Legs 3
- FT7 (High speed wire motor)
- HT4 Acoustic shell 4 (Used as border)
- FT6 Legs 2
- LT4 LX4
- FT5 (High speed wire motor)
- FT4 Legs
- HT3 Acoustic shell 3 (Used as border)
- FT3 (High speed wire motor)
- FT2 Proscenium legs
- LT 3 LX3
- FT1 Proscenium border



Legend

Symbol	Name	Count	Notes
	Ayrton Rivale	22	Standard Mode 42ch
	Chauvet Rouge Outcast 2x Wash	20	22 ch mode
	XLED HD	34	10 ch mode
	2'lites Blinder 650W DWE	6	
	ADB Warp/M 12-30deg	6	
	Pacific 14<->35° Zoom	12	

**Store Torungen**

**Teknisk leder:** Finn Cato Andersen  
**Mobil:** +47 915 87 092  
**E-post:** fca@arendalkulturhus.no

Printed: 08.Oct.25  
 Printed By: Bjørnar Skuttaberg  
 File: AKAS-Store Torungen LXplot 2025

